



BURGERHOUT ELYTRA



COMBINED ROOF TERMINAL

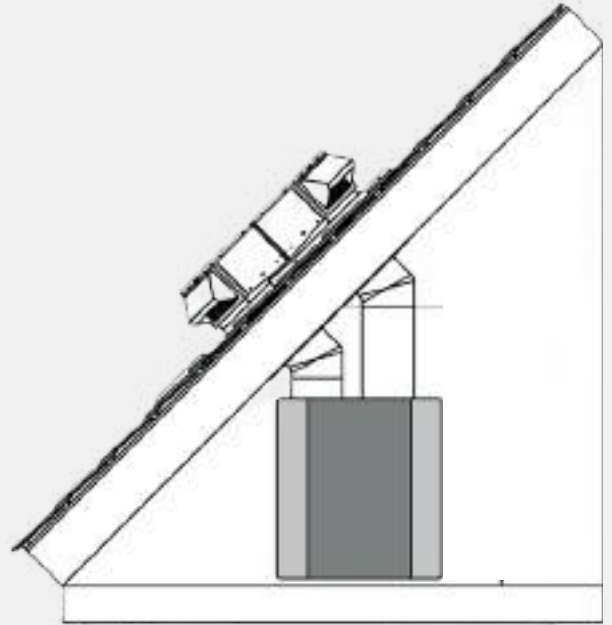
THE SMART SOLUTION FOR AIR/WATER HEAT
PUMPS WITH INDOOR UNITS

THE SOLUTION FOR ALL TYPES OF INDOOR INSTALLED AIR/WATER HEAT PUMPS

Burgerhout introduces the Elytra, a specially developed combined roof terminal for the air-side connection of an indoor air/water heat pump without an outdoor unit.

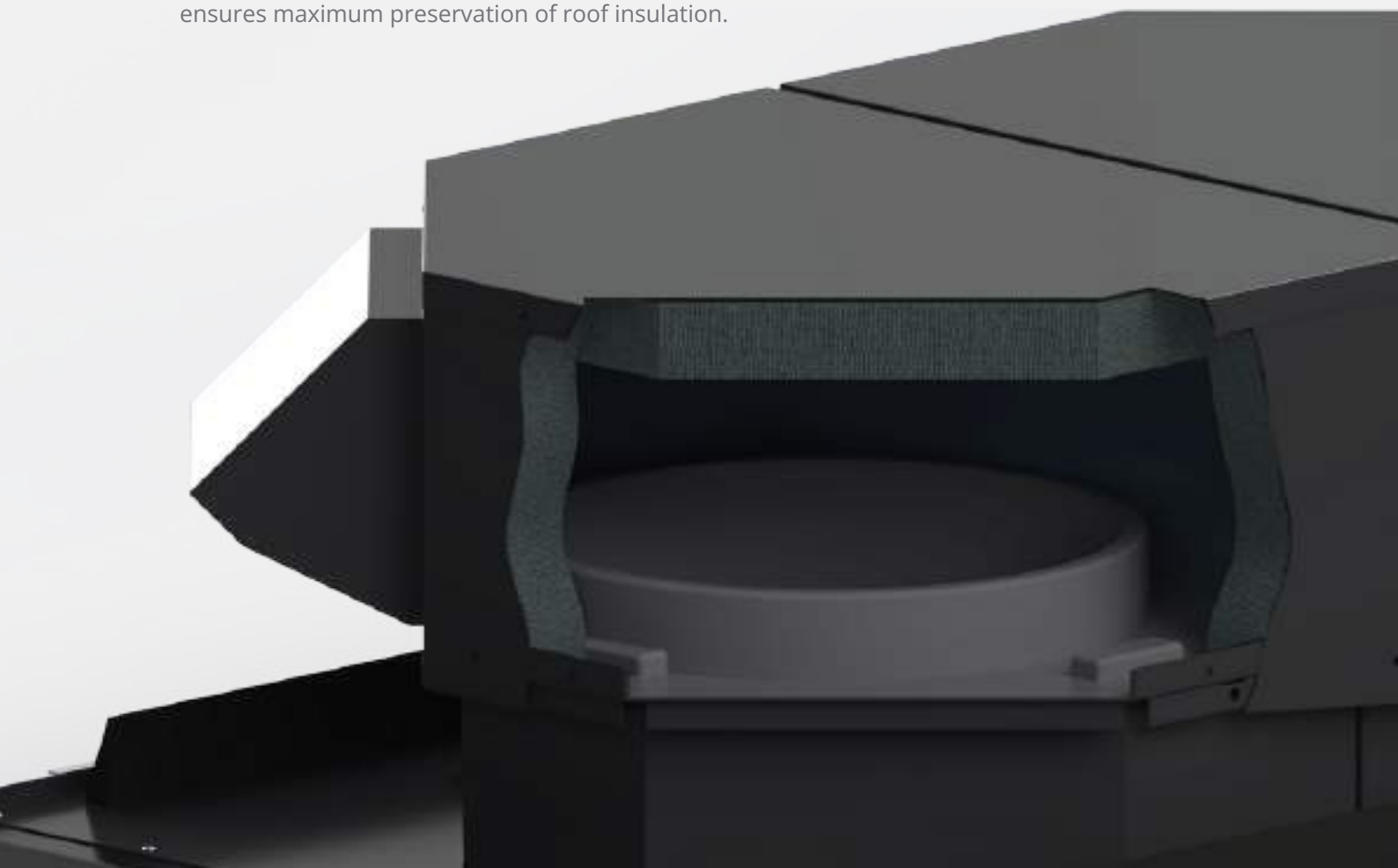
With the Elytra, the air intake and exhaust are combined in a single roof terminal, ensuring easy and quick installation.

The compact Elytra, in combination with the indoor heat pump, is an excellent solution for renovation and new-build homes with limited space for technical installations.



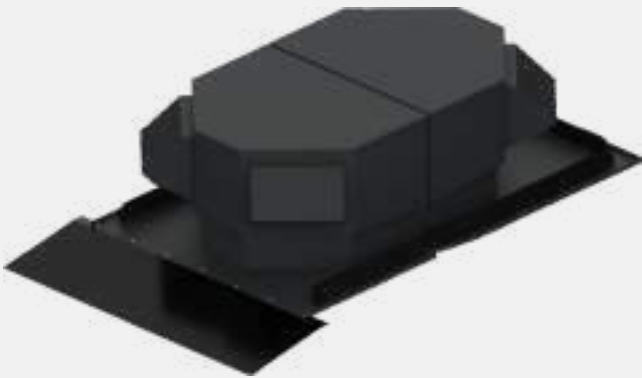
HIGHLIGHTS ELYTRA

- **Easy and quick to install** - Can be installed by a single installer without the need for a crane, thanks to the modular construction made of 3 parts.
- **Maximum heat pump efficiency** - Innovative aerodynamic design ensures minimum recirculation and drag.
- **Sound reduction** - Effective noise dampening of up to an average of 10 dB, thanks to 50 mm of high-quality insulation.
- **Minimal Impact on roof insulation** - Perpendicular placement on the roof ensures maximum preservation of roof insulation.



FLEXIBLE INSTALLATION OPTIONS

The modular Elytra is available in two versions to provide flexibility during installation. This provides optimal versatility for various roof types and structures. Both versions share the same technical characteristics and superior performance, while also giving installers greater freedom to choose the ideal placement.



Vertical (Portrait)

The vertical version is the configuration where the cover piece is placed on the short side.



Horizontal (Landscape)

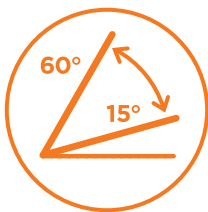
This version is placed horizontally on the roof, with the cover piece located on the long side.

VERSATILE AND EASY INSTALLATION

The combined roof terminal is available in a version suitable for serial house construction and a modular model for easy installation per individual home.

The modular Elytra is composed of 3 parts, which are all manageable both in size and weight. As a result, Elytra can be installed by a single installer, without the use of a crane.

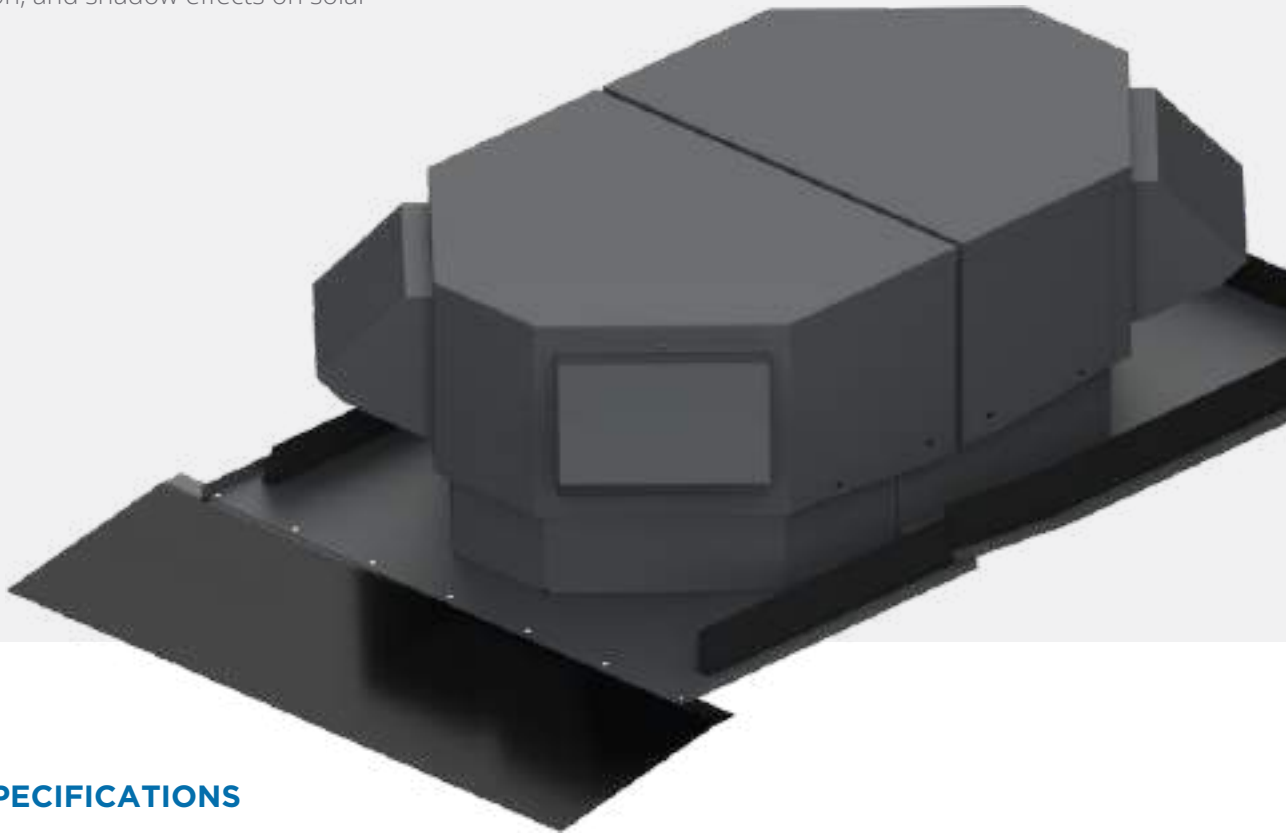
Both Elytra versions can be installed on any roof surface with a pitch between 15 and 60°. The combined roof terminal is installed perpendicularly through the roof and sealed on the inside with an airtight roof boarding plate.



INNOVATIVE DESIGN

The Elytra has been developed with an innovative aerodynamic design that minimises air resistance and recirculation. This results in stable airflow and maximum heat pump efficiency and output. During development of the design, extensive testing was conducted on airflow, dimensions, noise reduction, and shadow effects on solar panels.

Thanks to this optimized design, the Elytra not only offers better performance but also operates more quietly and has minimal impact on the roof environment.



ELYTRA SPECIFICATIONS

- Total weight: ~ 35 kg
- External dimensions: 1420 x 915 x 400 mm
- Connection diameter: Ø 250 mm
- Air supply and exhaust: up to 1000 m³/h
- Noise reduction (average): 10 dB
- Concealed duct cover with Leadax



SUITABLE FOR A WIDE RANGE OF HEAT PUMPS

The Burgerhout Elytra was developed with flexibility in mind. Thanks to its well-thought-out design, the Burgerhout Elytra can be used with a wide range of indoor air/water heat pumps without an outdoor unit.



In practice, this means that the Elytra can be seamlessly combined with a wide range of heat pump systems. The smart positioning of the ducts and optimal air exhaust ensure reliable operation, regardless of the brand or type of heat pump.

Whether it concerns new construction or renovation, with the Burgerhout Elytra you choose a single universal roof terminal solution that combines ease of installation with long-term reliability. This gives installers maximum freedom in system choice without compromising on performance or dependability.

BURGERHOUT ELYTRA COMBINED ROOF TERMINAL

Diameter Ø (mm)	Version	Art. nr.
250	Vertical (Portrait)	400480800
250	Horizontal (Landscape)	400480802







Burgerhout

Burgemeester Grollemanweg 14
9405 TN Assen
The Netherlands
T: +31 592 34 30 43
E: info@burgerhout.nl